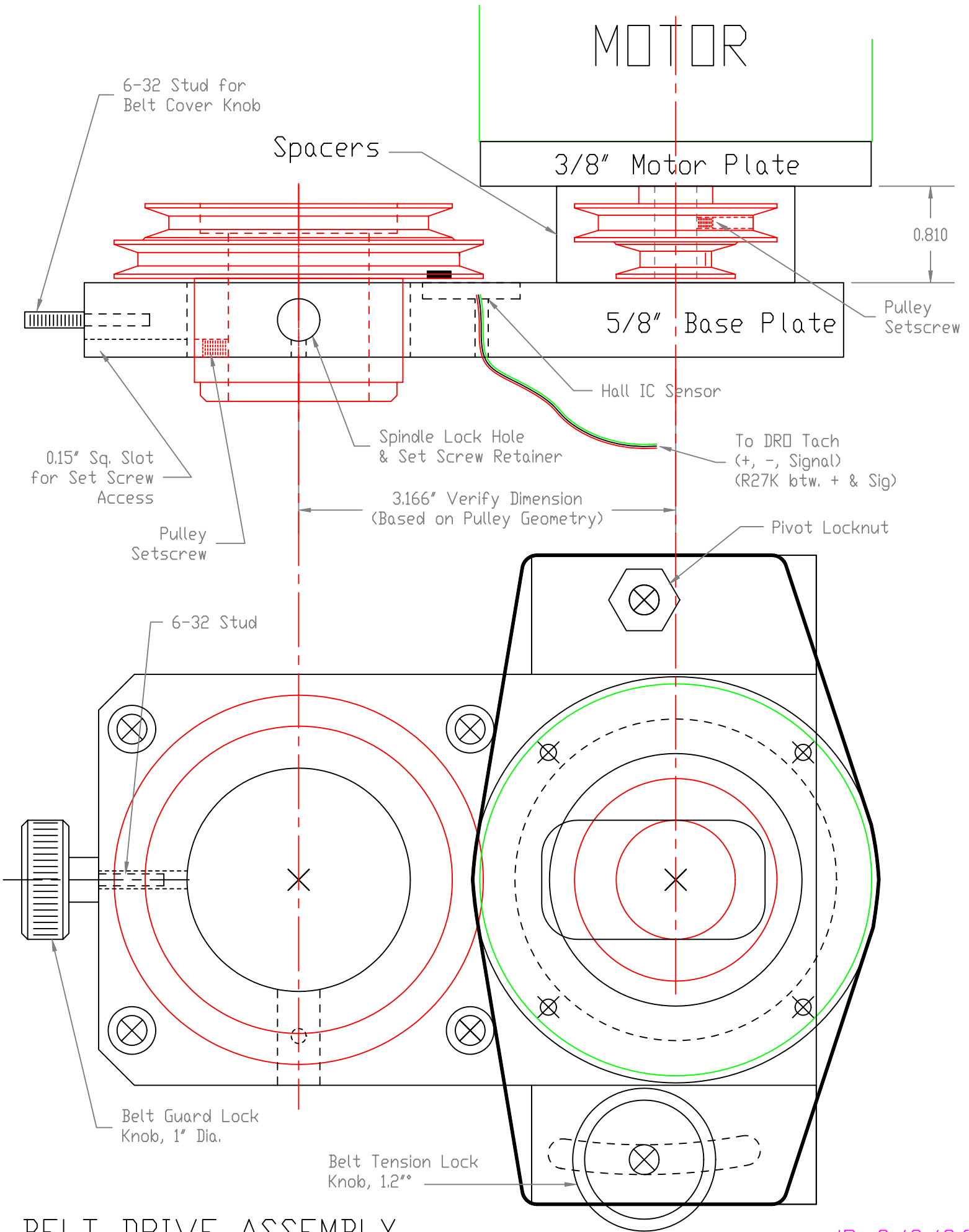


MOTOR

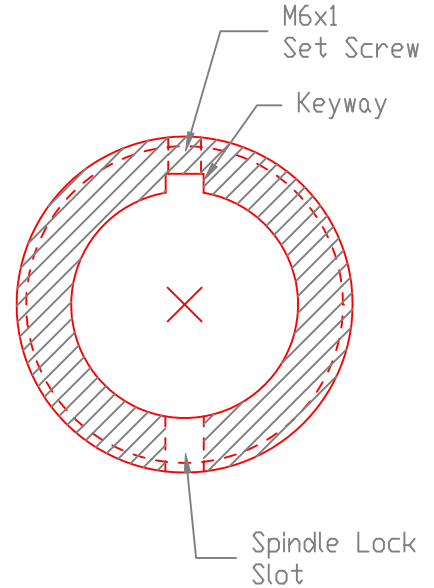
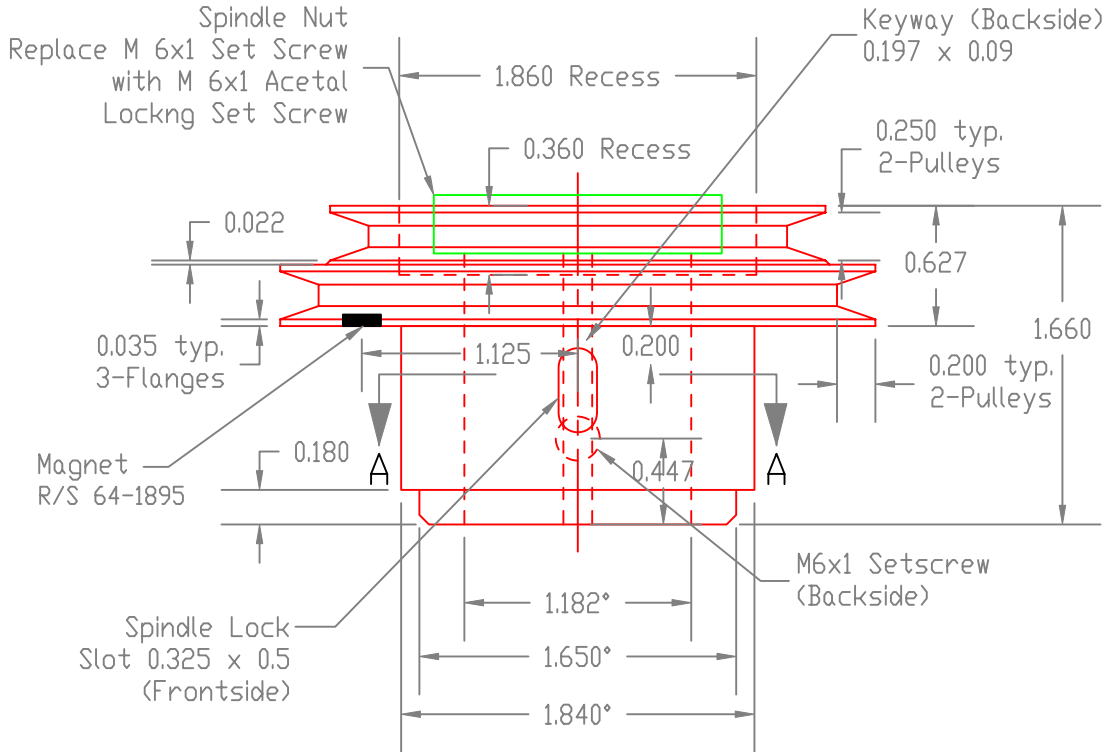


SPINDLE PULLEY

3.10" $\text{OD } 38^\circ$

2.58" $\text{OD } 38^\circ$

(FORTAL - 48,000 psi ALUMINUM)



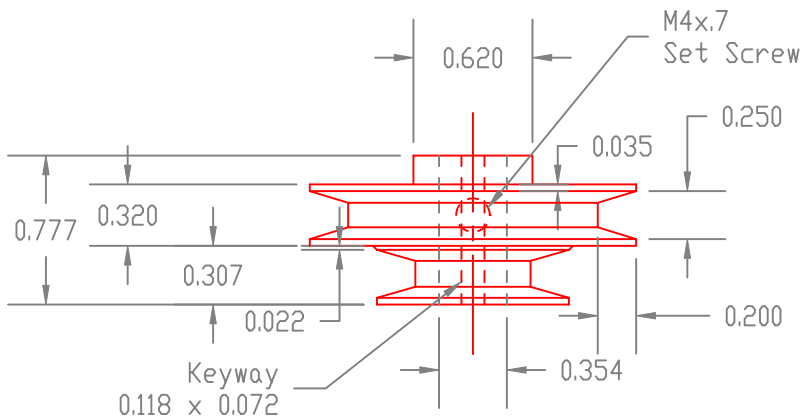
SECTION A-A

MOTOR PULLEY

1.0" $\text{OD } 32^\circ$

1.7" $\text{OD } 34^\circ$

(FORTAL - 48,000 psi ALUMINUM)



STOCK LOW - 1200 HIGH - 2750

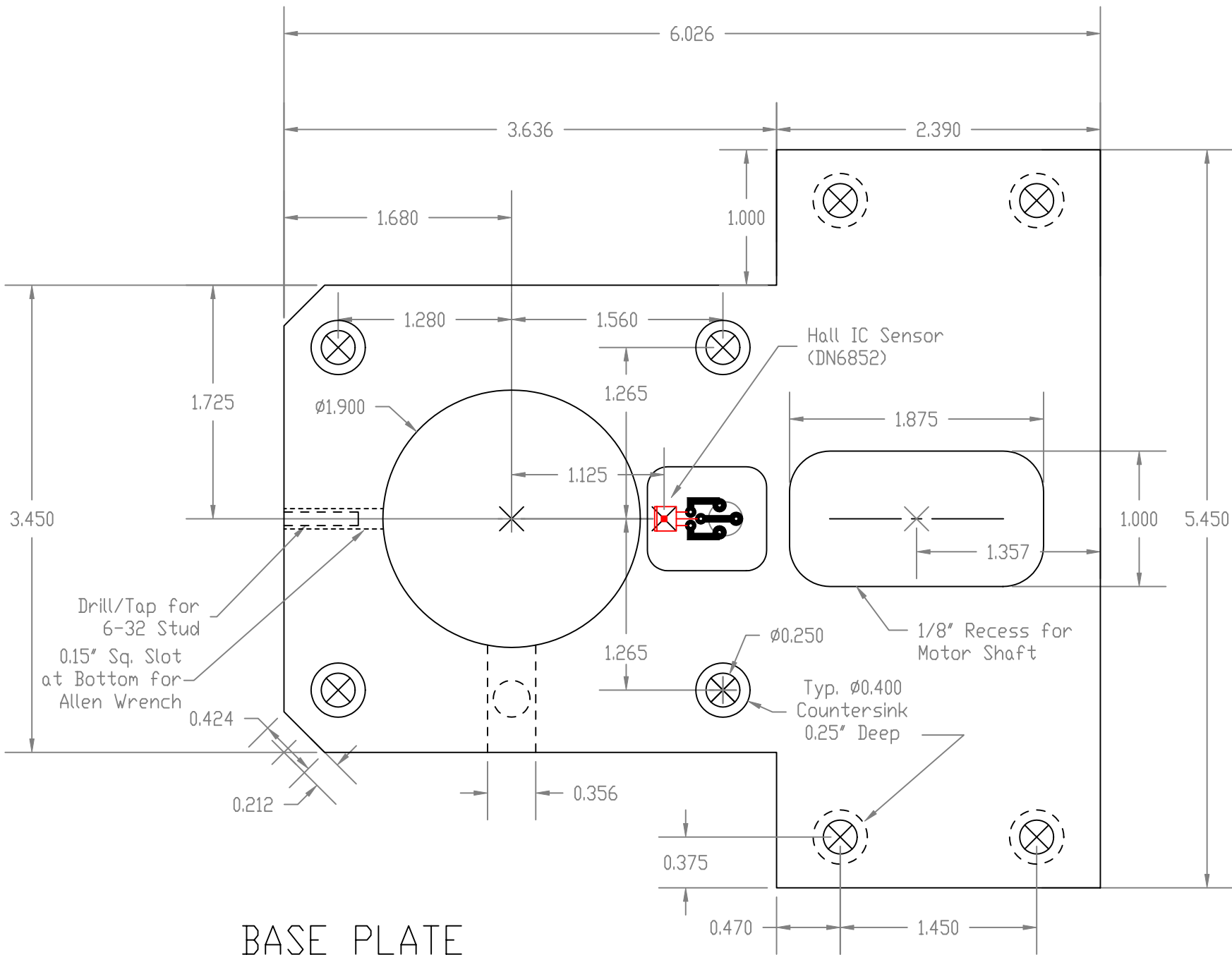
	OD	OD-.04	OD	OD-.04
motor	1.000	0.960	1.700	1.660
shaft	3.100	3.060	2.585	2.545
speed		1,878		3,912
C-C		3.166		3.166

Gates 0130 2L130 1/4" x 13" 40°
Gates Truflex 0130 V-belt

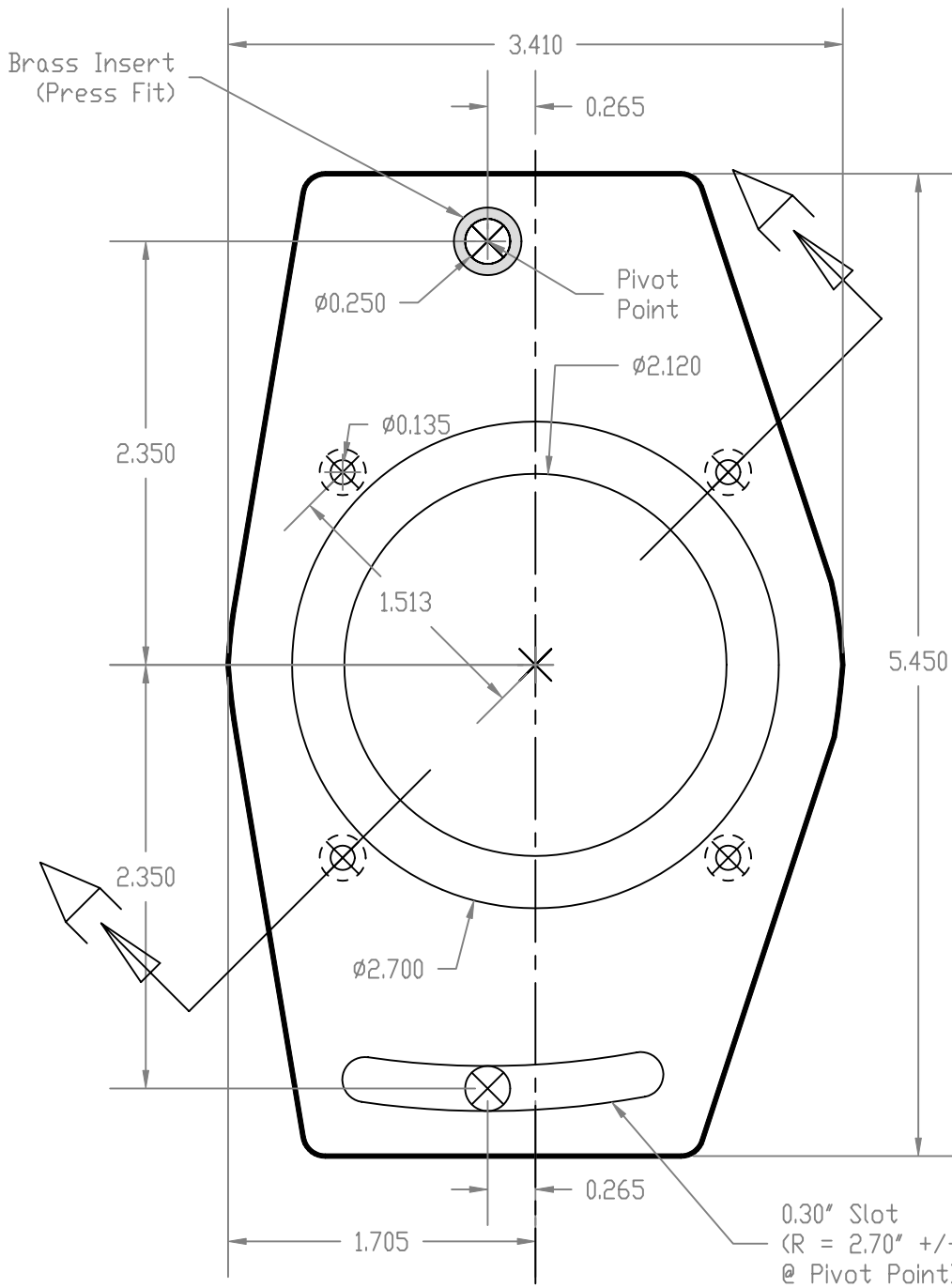
REVISIONS:

1. Corrected Typos, Radius for Motor Pivot corrected to 2.70".
2. Moved Base Plate Mounting Holes 0.02" to better center over spindle.
3. Added Belt Guard Sketch.
4. Added Set Screws to Spindle & Motor Pulleys.

JR 3/8/06

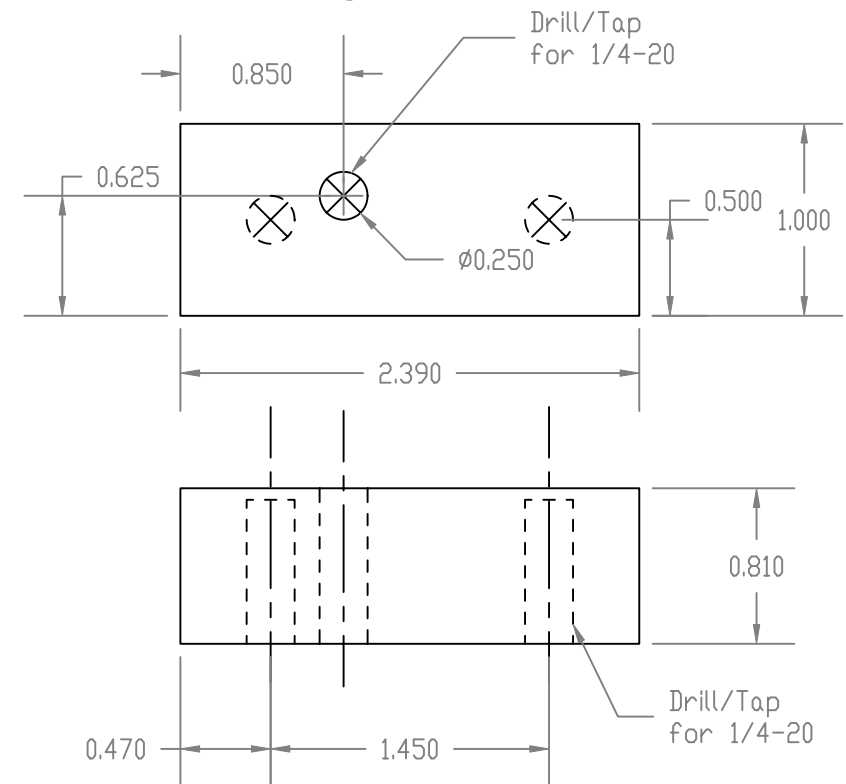


BASE PLATE
 (5/8" ALUMINUM PLATE)

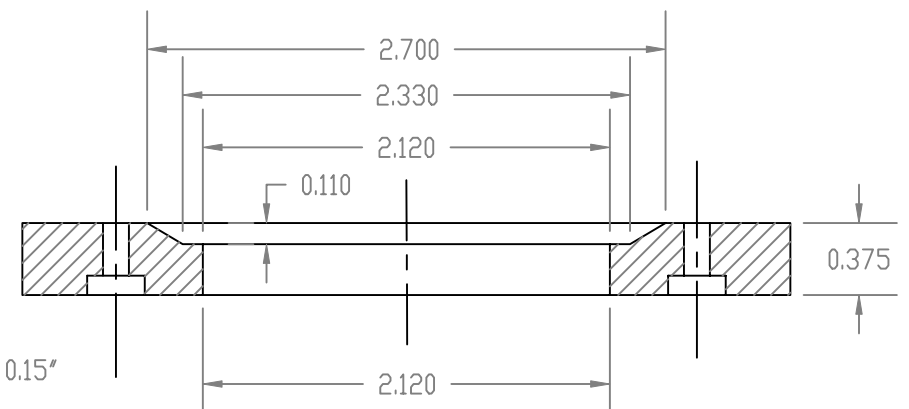


MOTOR PLATE
(3/8" ALUMINUM PLATE)

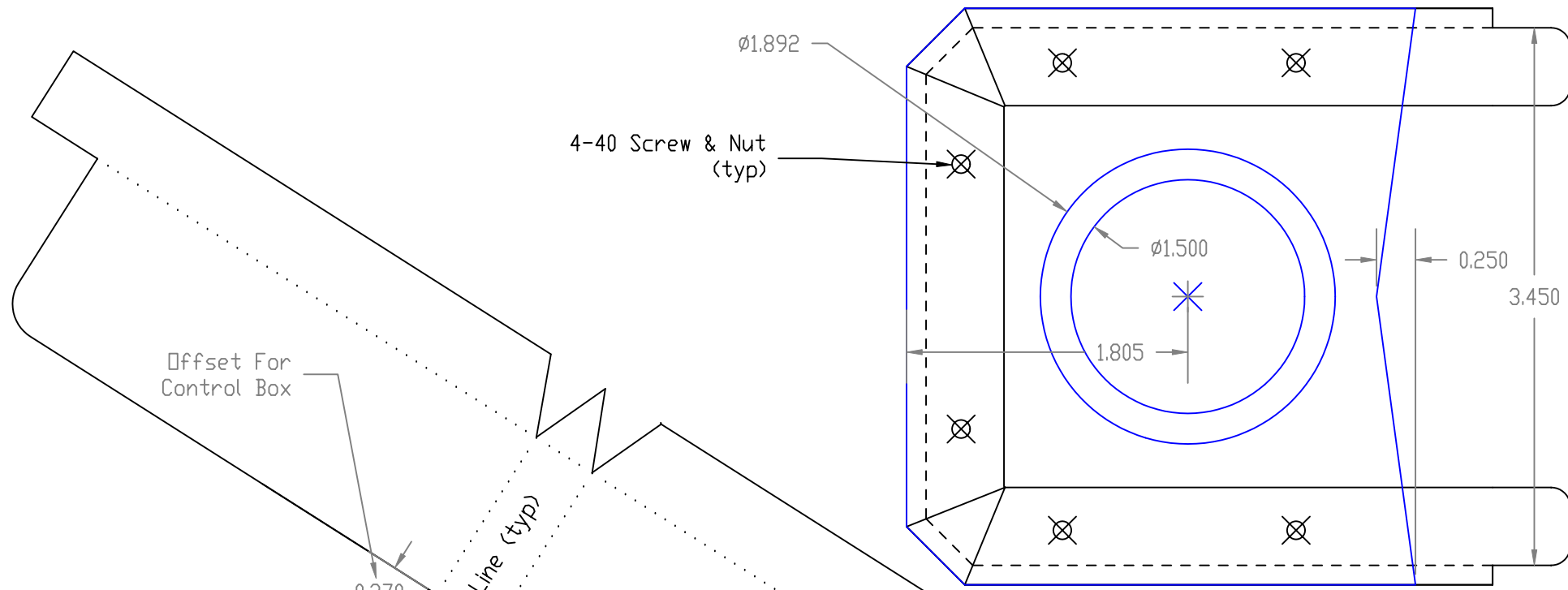
Pivot Side Spacer Shown
Lock Side is Mirror Image



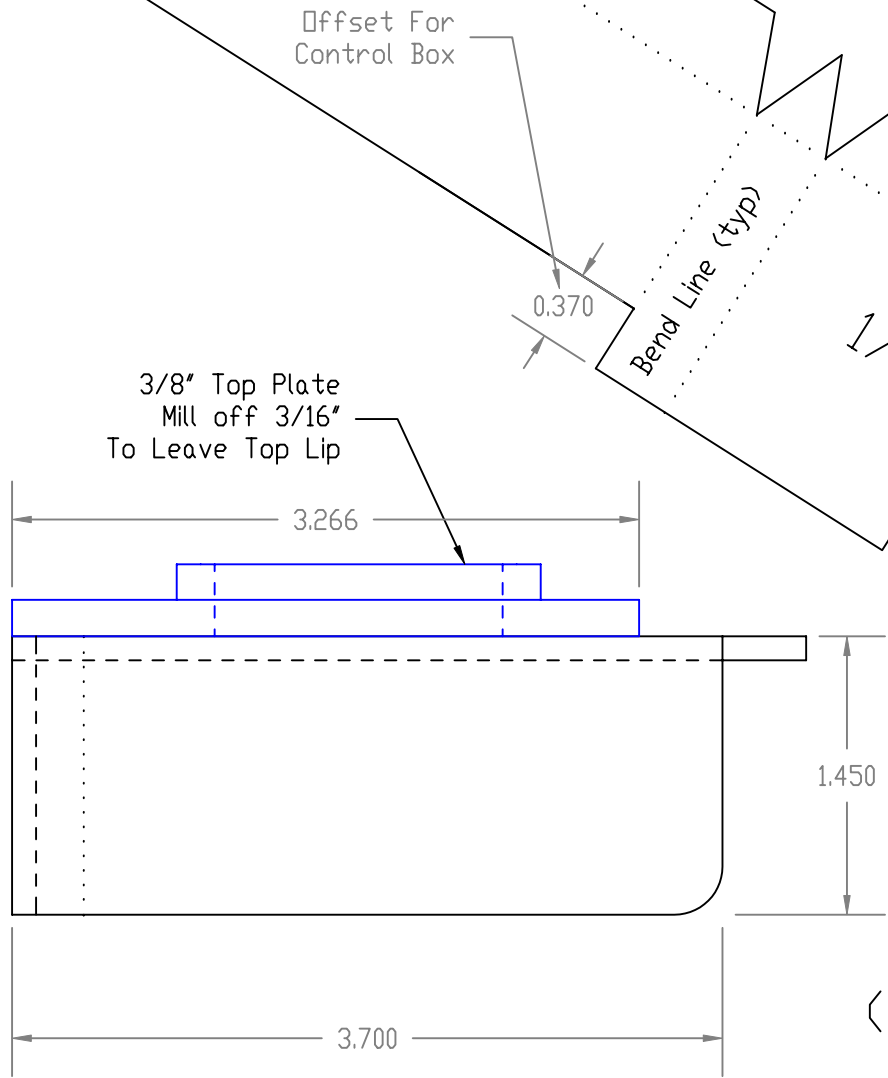
SPACERS
(1" SQ. ALUMINUM BAR)



SECTION A-A



TOP VIEW



SIDE VIEW

4-40 Screw & Nut (typ)

Ø1.892

Ø1.500

0.250

3.450

0.370

Bend Line (typ)

1/8" x 2" Side

Cutout for Guard Stud

Bend Line (typ)

Cutout for Spindle Lock

BELT GUARD
(1/8" X 2" AL SIDE)
(3/8" AL TOP)